

## **THE PRE-DONGLE UPDATE CHECKLIST**

### **Is your updater version 1.00?**

If not, because it's 1.01 or higher, you don't need to perform this update.

### **Does the PC you'll be using have an available serial port?**

If so, is there an available COM Port for it between COM 1 and COM 4? The dongle update uses software that only allows COM Ports 1, 2, 3 or 4 to be used. Be sure to have one of these available when it's time to do the update.

If not, you'll need to get a USB/Serial adapter and install any necessary drivers to go with it. Do you have an available USB port? You'll have to in order to use the USB/Serial adapter to perform this update. Is there an available COM Port for it between COM 1 and COM 4? The dongle update uses software that only allows COM Ports 1,2,3 or 4 to be used. Be sure to have one of these available when it's time to do the update.

### **Did you receive the "805 Only" CD with the Dongle?**

The following simplified instructions are predicated upon having that CD.

## ONKYO TX-SR805 DONGLE UPDATE

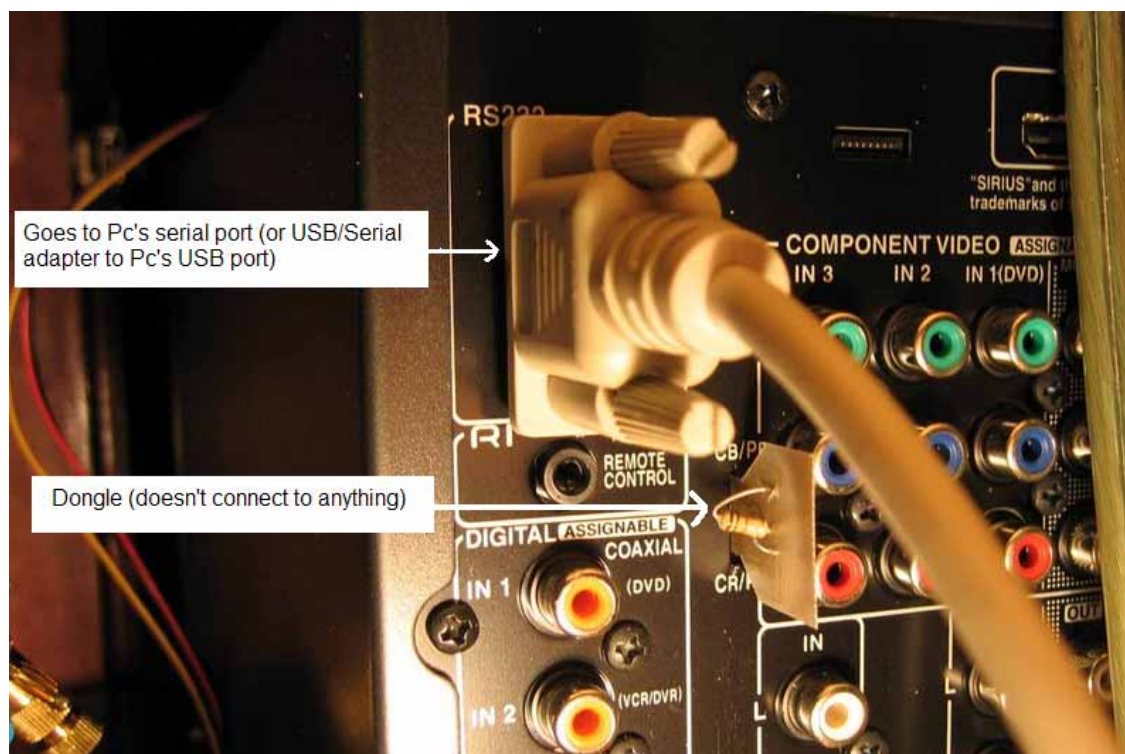
1) Drag the TX805 folder from the “805 ONLY” CD to your C:\ drive. Be sure you have the C:\TX805 folder when done. Also, take a quick second afterwards to open C:\TX805\flasta\_exe and be sure the files 875\_223a.mot and FlashSta.exe are both there. This will be important later on.

Also, launch C:\TX805\FilePathPasteValue.txt in Notepad, or whichever editor you prefer. Keep this file open, as you’ll need to paste its one-line value in a later step.

2) Unplug Onkyo receiver. (ALWAYS UNPLUG POWER BEFORE INSERTING/REMOVING DONGLE!)

3) Plug in the dongle as shown below.

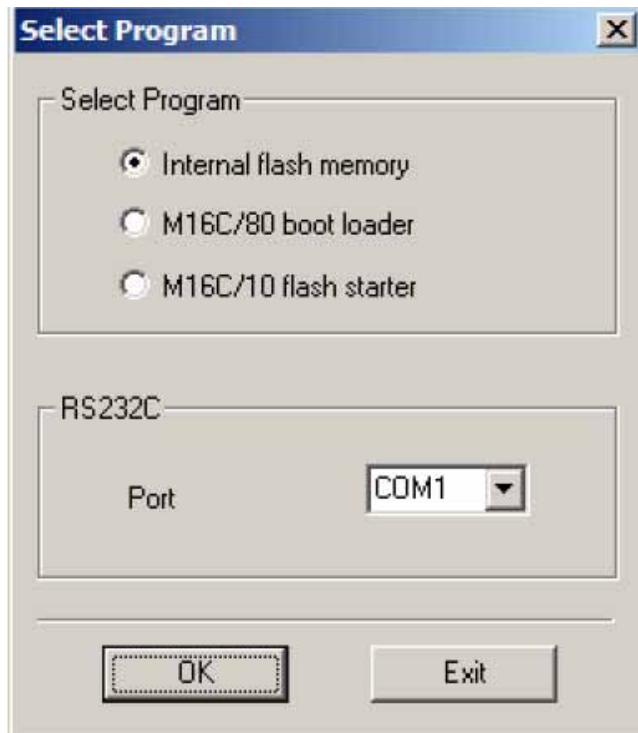
4) Connect your RS232 connector from the RS232 port on the back of the receiver to your PC’s serial port (or to your USB/Serial adapter, and your adapter then to the USB port if your PC has no serial port).



5) Plug in the Onkyo receiver’s power chord. All lights should be off, including the standby light. If standby light is on, unplug Onkyo receiver’s power chord, check connections, and plug receiver’s power back in, being sure all lights are off.

6) Launch C:\TX805\flasta\_exe\FlashSta.exe

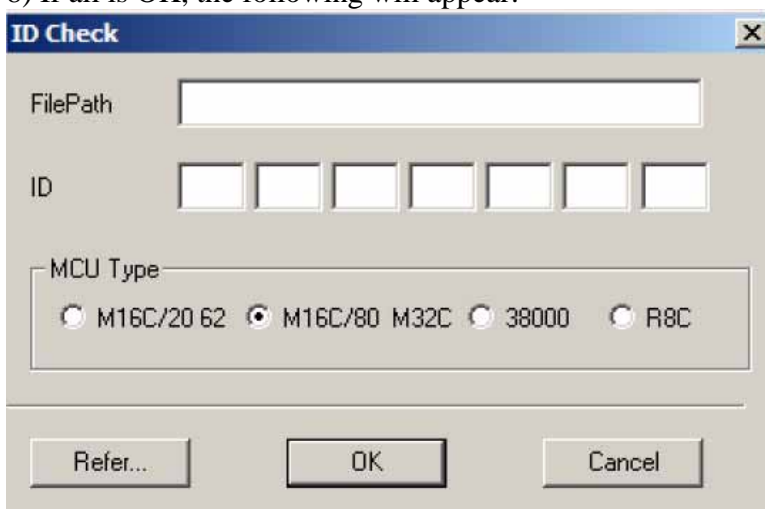
7) When the following window appears, be sure Internal Memory is selected. Select the com port your serial port (or USB/Serial adapter) is using.



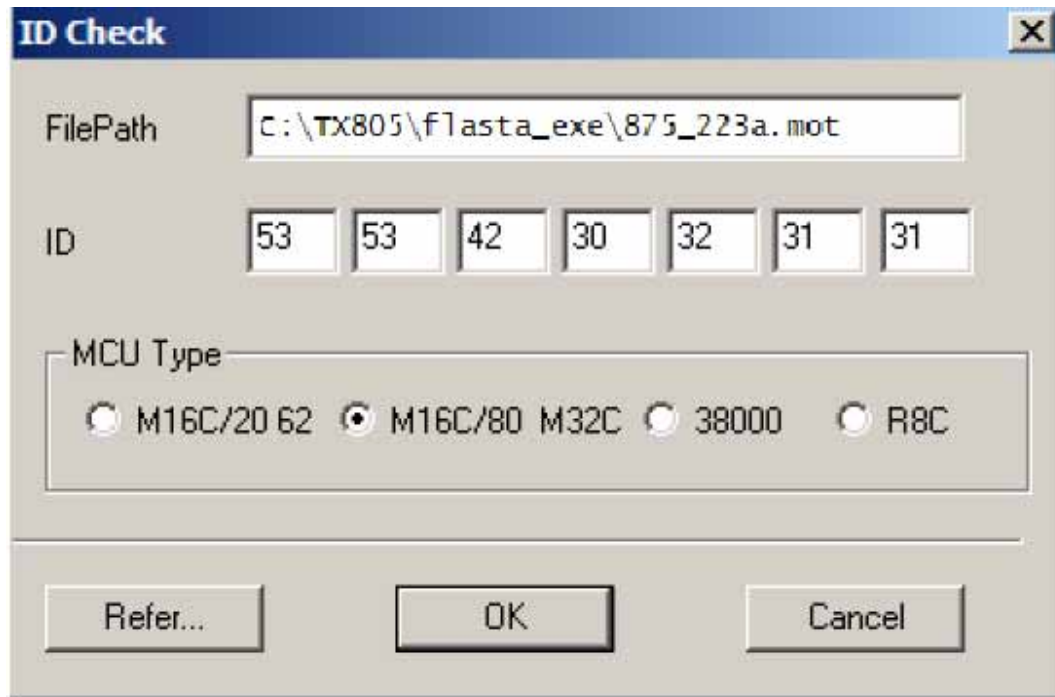
Click OK.

If you receive a timeout message after 15 seconds, you have a problem. If you see a dialog box for serial port settings, you have a problem.

8) If all is OK, the following will appear:



Fill it out with the following values (be sure M16C/80 M32C is selected, and you can paste the value from C:\TX805\FilePathPasteValue.txt, opened in step 1, directly in the FilePath field to avoid any typos).

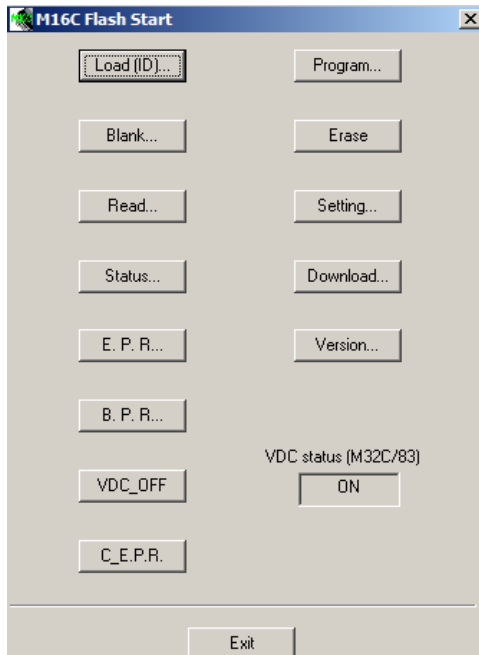


The image shows a dialog box titled "ID Check". It contains the following fields and controls:

- FilePath:** A text box containing the path "c:\TX805\flasta\_exe\875\_223a.mot".
- ID:** A row of seven numeric input boxes containing the values 53, 53, 42, 30, 32, 31, and 31.
- MCU Type:** A group box containing four radio buttons:
  - ☐ M16C/20 62
  - ☒ M16C/80 M32C
  - ☐ 38000
  - ☐ R8C
- Buttons:** At the bottom are three buttons: "Refer...", "OK", and "Cancel".

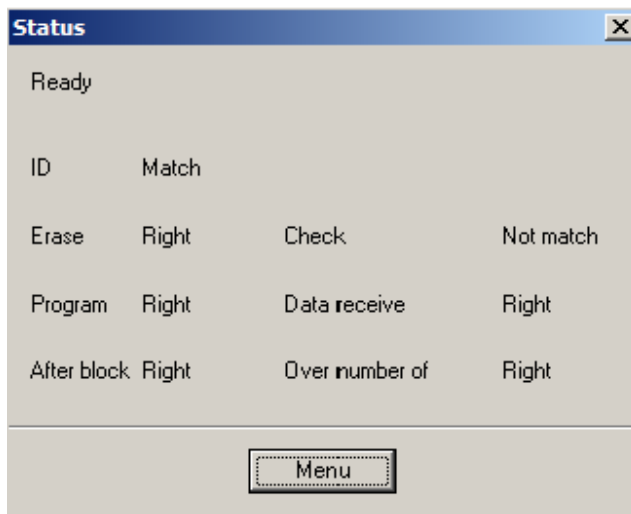
When done, click OK.

9) The following appears:

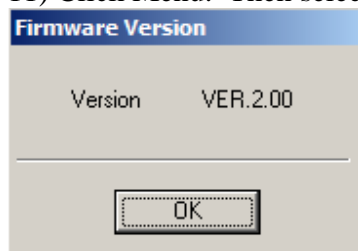


10) Click Status...

The following should appear:



11) Click Menu. Then select Version. The following should appear:



- 12) Click OK. This shows you are communicating with the MCU properly.
- 13) Back on the M16C Flash Start window, select E.P.R (erase/program/read). Wait for about 10 seconds, then you should see an erase box come up. Then program, then read. It takes maybe 20-30 minutes for program and read (combined) to complete. If something goes wrong, you can simply restart. The boot loader is never reprogrammed, therefore you can recover easily on any failures. (I left the default of 40ms for the timing.)
- 14) Once the read is verified, select OK, then exit FlashSta.exe.
- 15) Pull the power plug on the Onkyo.
- 16) Disconnect the dongle (wiggle it out). Pull the RS232 connector from the back of the receiver.
- 17) Plug power back to the Onkyo. You may or may not get an EEPROM error. If you do, see the avsforum on how to clear settings, then store settings. If you don't get an EEPROM error, you should be done with the update process.
- 18) Check the firmware version to verify.