

JBL LSR708i and LSR705i and M2 Tuning Files for Crown DCi “N” Power Amplifiers

Crown DCi “N” (network) Power Amplifiers can be configured for use with JBL LSR705i and LSR708i loudspeakers. The attached speaker tuning library file [JBL M2 LSR705i LSR708i Tunings V1.0 20151208.DCi Series.SpeakerTuning](http://audioarchitect.harmanpro.com/en-US/software) can be loaded into the control panel of Crown DCi Power amplifier using Harman HiQnet™ Audio Architect Software, version 1.6 or later. The software is available for download at <http://audioarchitect.harmanpro.com/en-US/software> . Following are instructions to load the file:

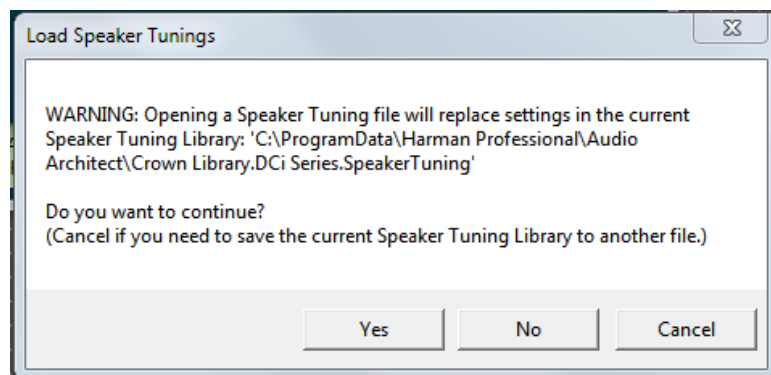
Open Audio Architect Software. This assumes you have created a venue that includes one or more Crown DCi Power Amplifiers.

In the Room View, click on a DCi Power Amplifier

Viewing the amplifier control panel, select File\Open\Speaker Tuning.



The program will warn that you are about to replace existing speaker tunings you may currently have in place. If you have other speaker tunings on your computer, you should save these before loading the new tuning library file.



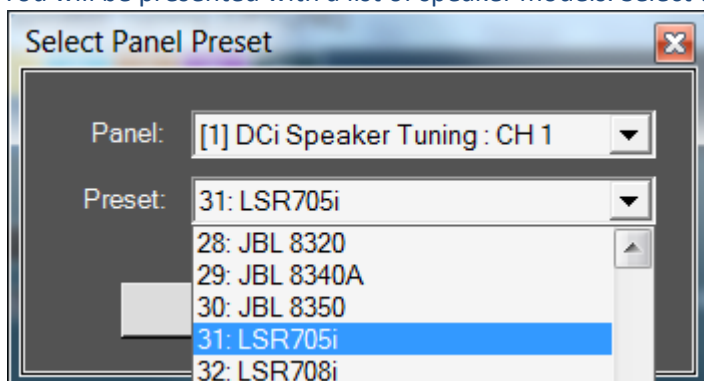
You can then navigate to and select the speaker tuning library file that includes JBL 7 Series and M2 Speakers. Once it is loaded, you can select the particular tuning needed on a per-amplifier channel basis. In the block diagram (shown below) double-click on the speaker tuning icon for the channel(s) you want to configure.



After clicking the icon, you will see the following speaker tuning panel. On this speaker tuning panel, select “Recall”



You will be presented with a list of speaker models. Select the preset for the desired speaker model



The following presets re provided for 7 Series Speakers:

- LSR705i:** LSR705i Single wire tuning
- LSR708i:** LSR708i Single wire tuning
- LSR705i LF** LSR705i Bi-Amp Tuning (Woofer)
- LSR705i HF** LSR705i Bi-Amp Tuning (Tweeter)
- LSR708i LF** LSR708i Bi-Amp Tuning (Woofer)
- LSR708i HF** LSR708i Bi-Amp Tuning (Tweeter)
- M2 HF** JBL M2 HF
- M2 LF** JBL M2 LF NoHP – Full Range LF
- M2 LF** JBL M2 LF HP27 –Includes High Pass Filter at 27Hz (Recommended)

If you plan to use the speakers in bi-amplified mode, you will use bi-amp speaker tuning presets – one for the Tweeter and one for the Woofer.

NOTE: You will need to configure the amplifier channels for bi-amplified operation. After selecting the speaker tuning preset, navigate back to the DCi Control Panel. To create a bi-amplified amplifier configuration, double click the “Mode” button in the amplifier control panel.



On the mode settings, select the “Y” configuration for the amp channels you wish to bi-amp. As an example, this picture shows a DCi8300 configured for bi-amp tunings



One HF tuning and one LF tuning would be used for each bi-amplified speaker. After configuring two channels for “bi-amplified” configuration using the MODE icon, select the appropriate LSR705i, LSR708i or M2 HF and LF speaker tuning for the amp channels in the bi-amplified pair.

Exit and Save your file.